

Certificate of Analysis

I. Product Information

Cell line: CHO-K1/5-HT2A

Cat No: M00251

Lot Number: D2051311

Host Cell: CHO-K1

Target gene: 5-HT2A

Quantity: 2 vials of frozen cells

Shipping Conditions: Dry ice

Recommended Storage: Liquid Nitrogen

II. Stable Cell Line Information

Recommended Cell Culture Medium: Ham's F12(Gibco, Cat#11765-054, 10% FBS (Gibco,Cat#10099-141), 400 µg/ml G418 (Gibco, Cat#10131-027)

Freeze Medium: 45% Culture Medium, 45% FBS, 10% DMSO

Application: Functional assay for CHO-K1/5-HT2A

QC: Calcium assay

Mycoplasma 160: Negative

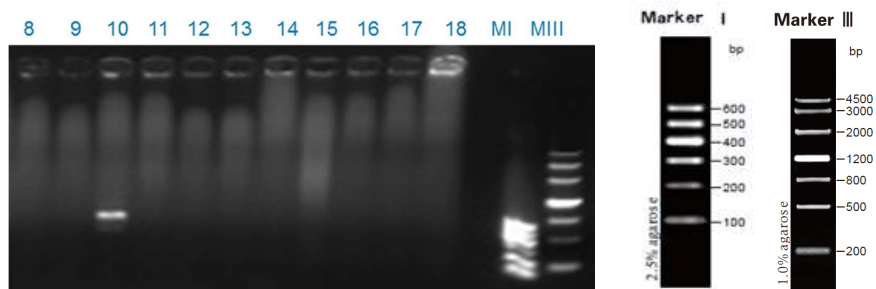


Figure 1. Lane 9 CHO-K1/5-HT2A

Certificate of Analysis

III. QC Data

Agonist test of 5-HT on CHO-K1/5-HT2A

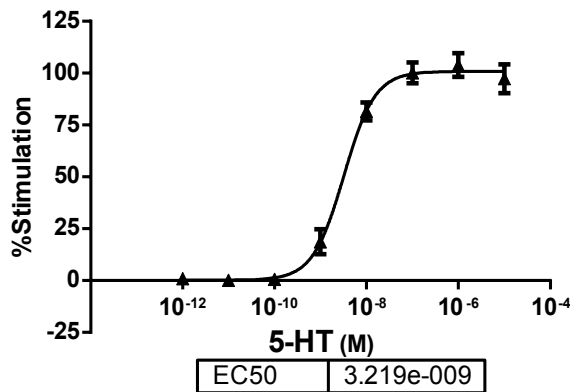


Figure 2. 5-HT-induced concentration-dependent stimulation of intracellular calcium mobilization in CHOK1/5-HT2A and CHO-K1 cells. The cells were loaded with Calcium-4 prior to stimulation with a 5-HT2A receptor agonist, 5-HT. The intracellular calcium change was measured by FLIPR. The relative fluorescent units (RFU) were plotted against the log of the cumulative doses (10-fold dilution) of 5-HT (Mean \pm SD, n = 4). The EC50 of 5-HT on 5-HT2A in CHO-K1 cells was 3.22 nM. The S/B of 5-HT on 5-HT2A in CHO-K1 cells was 27.

Prepared by



Mingying Du, B.S.

Scientist, Department of Biologics Development

Approved by



Michael Sun, M.S.

Scientist, Department of Biologics Development